

ROAD INDEX

A	I cont.	R	ROCK CREEK RD. A6-F4
	J		
B	BURROWS RD. B6-F6	S	SIDLEY RD. F1-F6 STOCKING RD. D1-F1 SHORT RD. F2-F3
	K		
C	CLAY STREET B1-B6	T	THOMPSON RD. A3-F3 TRASK RD. A2-A3
	L		
D	LEGE RD. CI-C6 LEROY RD.		
	M	U	
E	DEWEY RD. CI-C6		
	MADISON RD. D1-D6 MOSELEY RD. A1-F2	V	VALENTINE RD. A4-B4
F			
	N	W	WOODCREEK DR. B6 WOODHILL DR. B6
G			
	O	X	
H	PHILLIPS RD. F3 PLANK RD. A5-B6	Y	
		Z	
I			
	Q		

- ① LEDGEMONT HIGH SCHOOL
- ② LEDGEMONT ELEM. SCHOOL
- ③ THOMPSON METHODIST CHURCH
- ④ ST. PATRICKS CHURCH
- ⑤ ST. PATRICKS CHURCH
- ⑥ GRACE EVANGELICAL LUTHERAN CH.
- ⑦ CEMETERY
- ⑧ MAPLE GROVE CEMETERY
- ⑨ CEMETERY
- ⑩ THOMPSON VOL. FIRE DEPT.
- ⑪ THOMPSON TOWN HALL

THOMPSON TOWNSHIP

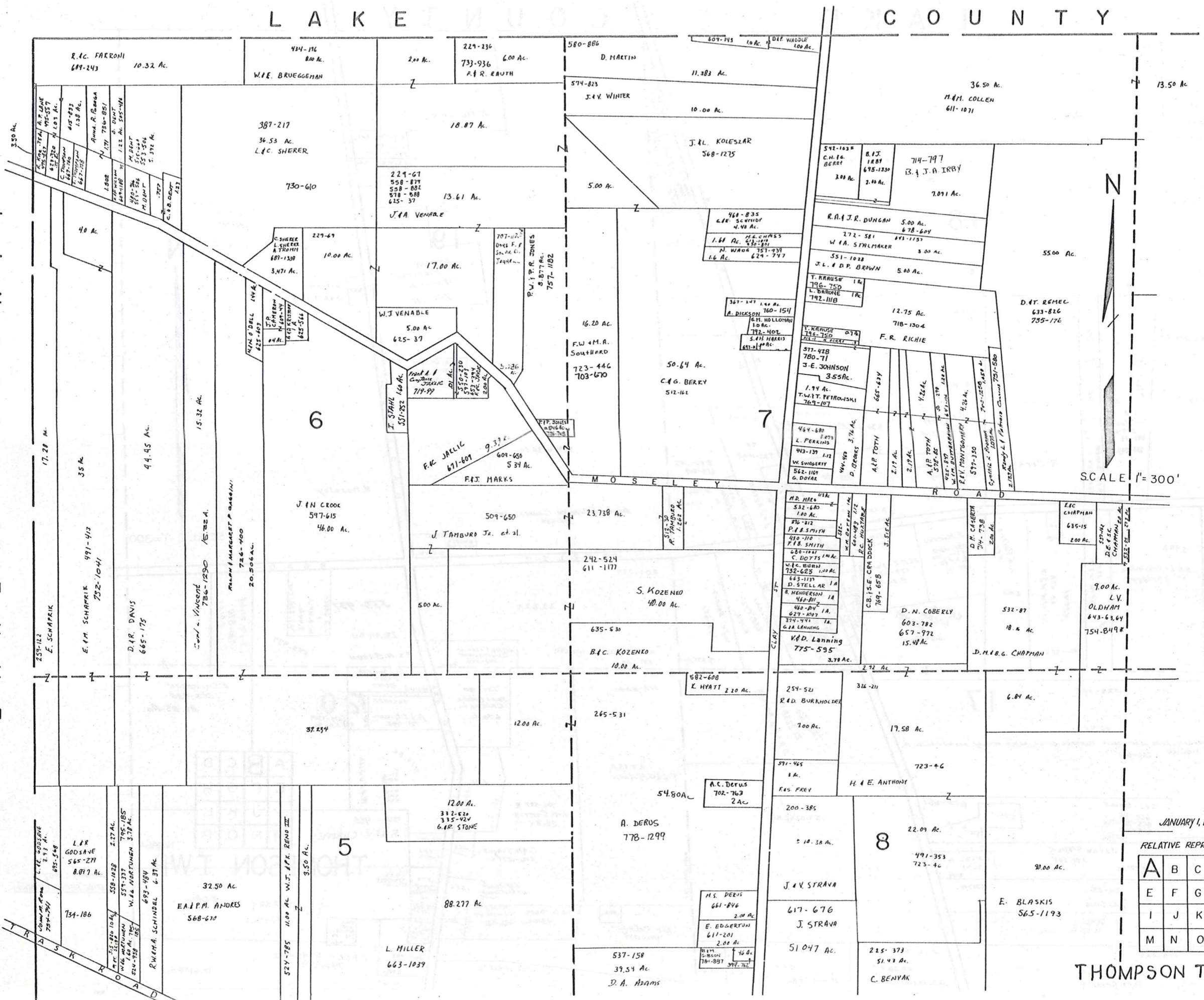
SCALE: 1"=2000'
ROBERT E. PHILLIPS,
GEAUGA COUNTY ENGINEER

--- UNPAVED ROADS
--- TOWNSHIP LINE
--- PAVED ROADS
--- COUNTY LINE



L A K E C O U N T Y

L A K E C O U N T Y



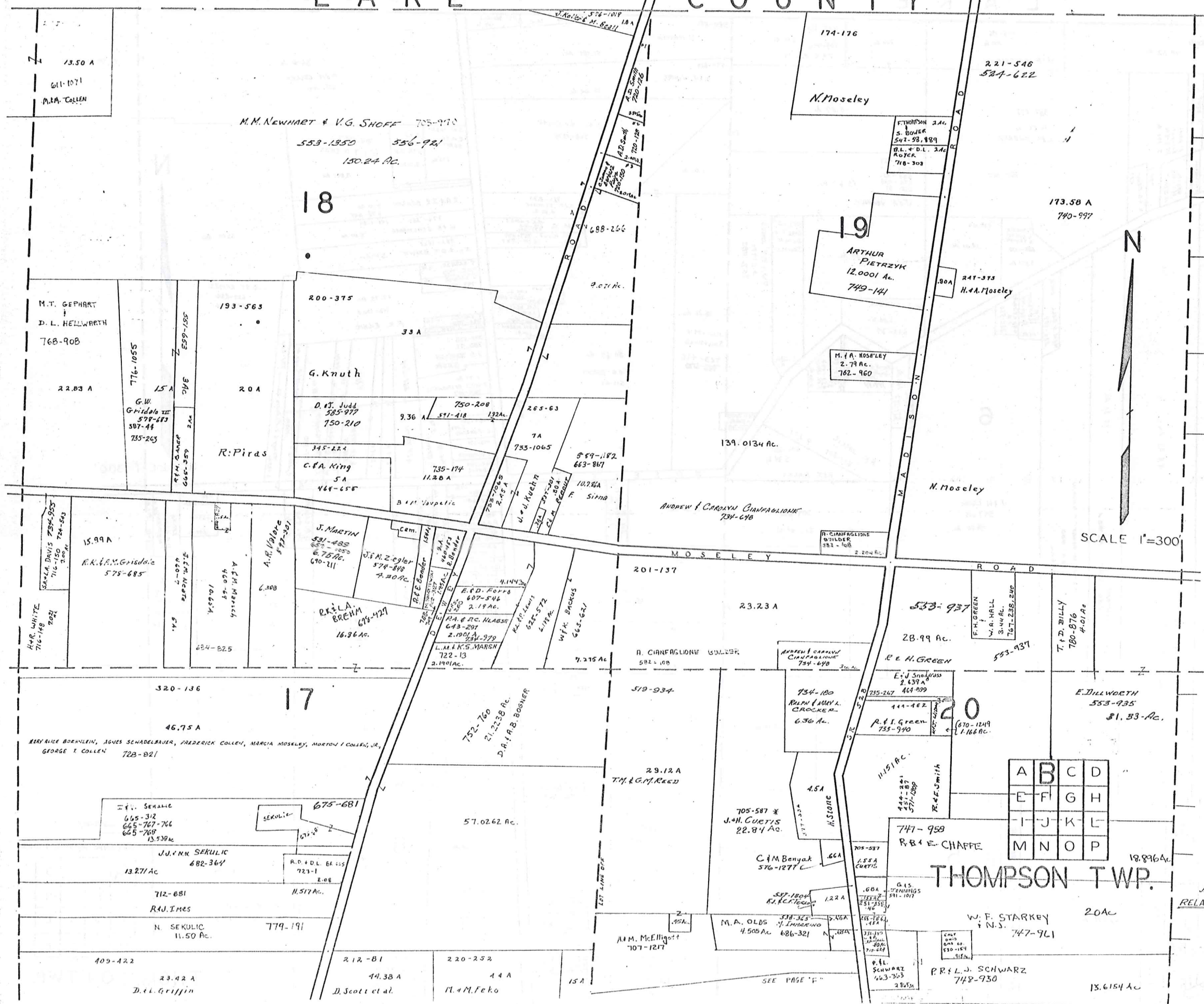
JANUARY 1, 1937

RELATIVE REPRESENTATION

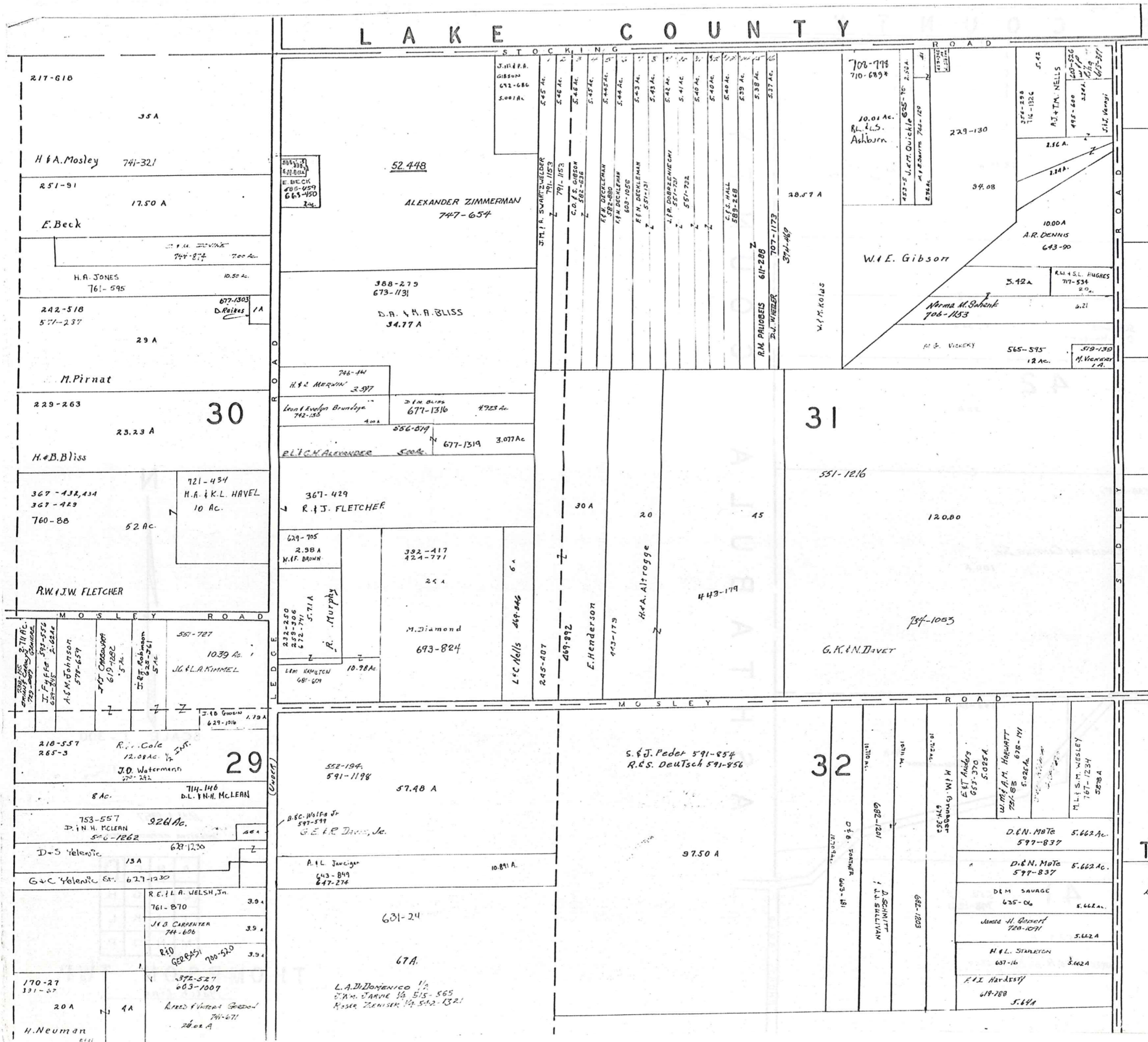
A	B	C	D
E	F	G	H
I	J	K	L
M	N	O	P

THOMPSON TWP.

L A K E C O U N T Y



L A K E C O U N T Y



SCALE 1" = 300'

A	B	C	D
E	F	G	H
I	J	K	L
M	N	O	P

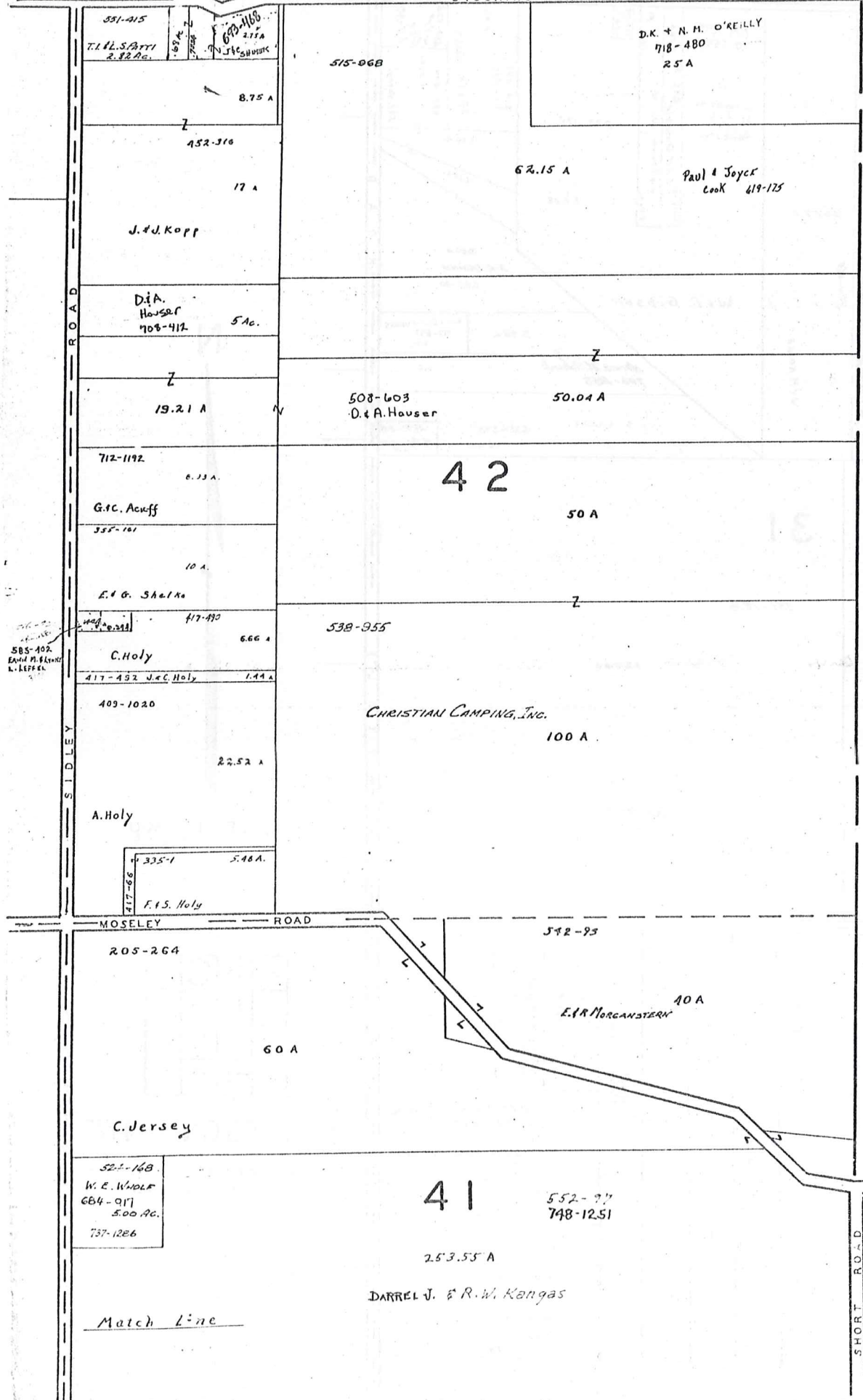
THOMPSON TWP

JANUARY 1, 1987
RELATIVE REPRESENTATION

L A K E C O U N T Y

STOCKING ROAD

A S H T A B U L L A C O U N T Y



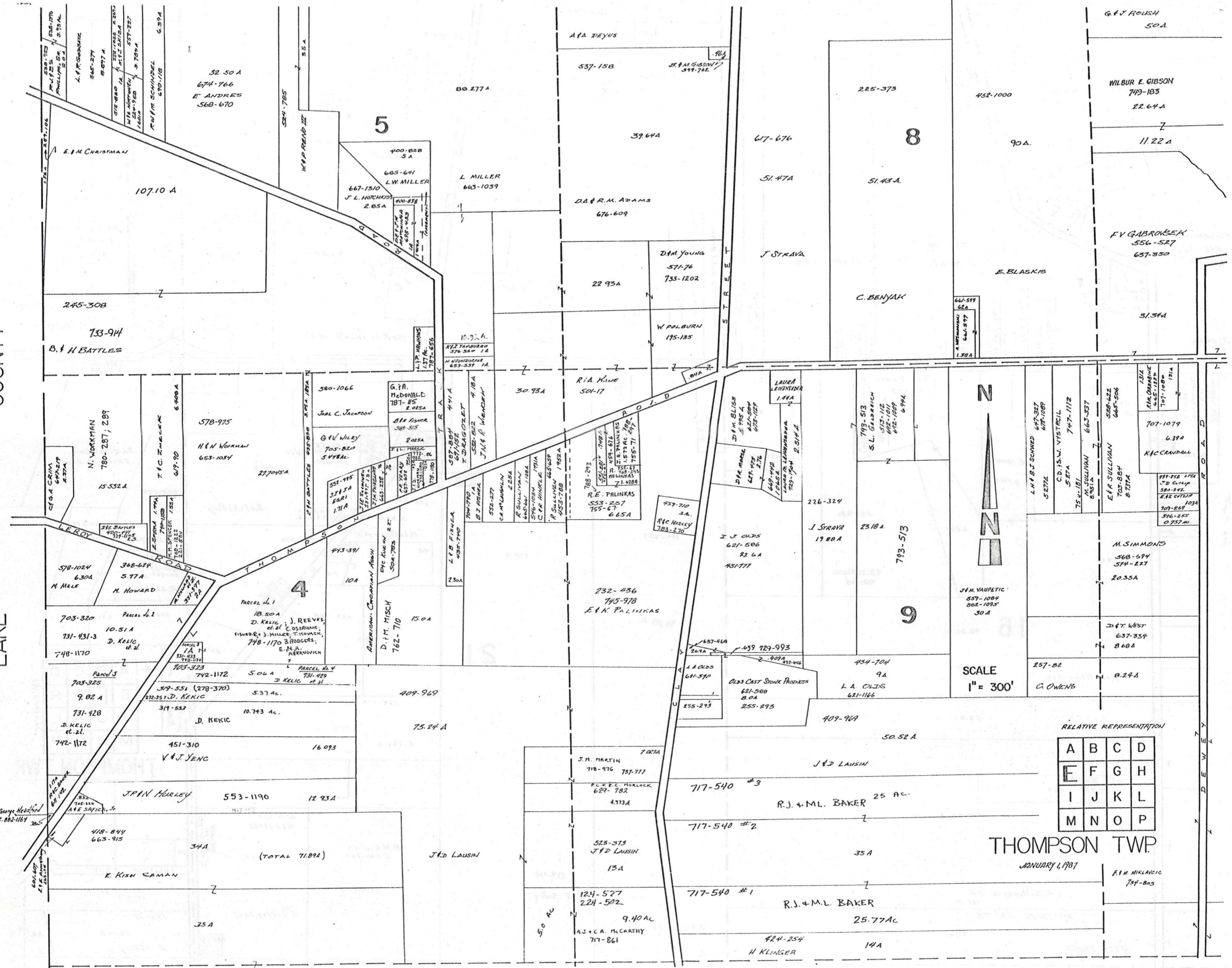
SCALE 1" = 300'

JAN. 1, 1957
RELATIVE REPRESENTATION

A	B	C	D
E	F	G	H
I	J	K	L
M	N	O	P

THOMPSON TWP.
Match Line

COUNTY
LAKE



RELATIVE REPRESENTATION

A	B	C	D
E	F	G	H
I	J	K	L
M	N	O	P

THOMPSON TWP.
JANUARY 1, 1907

G.W. Roush

22.64 A
749-183
WILBUR E. GIBSON

11.22 Ac
729-457
RONALD & BARBARA ROTUNDO
683-311

F. GARBOVSEK
556-527
637-350

H. CRANDALL
477-911
2-11A

31.34 Ac

D.H. SPICER
720-120
2.0 A

220-252

A.H. McElligott
12.67 Ac.

R.F.J. PAUL
707-1220
12.44 Ac.

SEE MAP B
20

M.M. STARKY
430-638-127

383-507
3.86 A

426-410
673-1203

N. WILSON
744-723
210-540

E.L. EDL. WARGELIN
690-819
3.36 A

733-942
I & R. Green

203-632

272-230

21.53 A

16 A

Bd. of Education

H.P. Crandall et al.

170-27

20 A

30 A

ENDLESS HORIZON'S, INC.
776-814
46 A

JANUARY, 1987
RELATIVE REPRESENTATION

SCALE 1" = 300'

DETAIL

15

Q

See Map "E"

513-750
477-914
NINA CRANDALL
671-118
25.386 A

R.F. RAUTH
434-9
4.28

88-198
9 A

Cemetery

H.H. ANDREWS
300 Ac.
777-311

E. NORRIS
8-374 A

39.46 Ac.

V.A. WILLIAMS
703-265

199-387

114 A

578-260
11.37 A

H. LATHROP ET AL

251-568
501-277 Sidco
501-537

19.58 A

205-574
11 A

443-557
10

Bd. of Park Com.
Thomp Pk. Dist.

255-415

6.50 A

6.07 A

94.39 Ac.

114 A

578-260
11.37 A

400-873
R.E. SIDLEY

205-176
C.E.L. CO.

11 A

233-15
423-820
501-277 Sidco
501-537 S.A.S.A

501-277
Sidco
501-537

205-574
11 A

70.33 A

734-805

22.04

94.39 Ac.

114 A

427-365

R.M. SIDLEY, INC.

174-314

15 A

400-714
5.25 A

501-277
Sidco
501-537

205-574
11 A

F.M. MIKAVIC

110.02 A

110.02 A

94.39 Ac.

114 A

427-365

R.M. SIDLEY, INC.

174-314

15 A

400-714
5.25 A

501-277
Sidco
501-537

205-574
11 A

J.F. SEGULIN
551-239 60 A

110.02 A

110.02 A

94.39 Ac.

114 A

427-365

R.M. SIDLEY, INC.

174-314

15 A

400-714
5.25 A

501-277
Sidco
501-537

205-574
11 A

D. MIKAVIC ET AL
582-70

110.02 A

110.02 A

94.39 Ac.

114 A

427-365

R.M. SIDLEY, INC.

174-314

15 A

400-714
5.25 A

501-277
Sidco
501-537

205-574
11 A

W.A.E. ASHBY
524-791

110.02 A

110.02 A

94.39 Ac.

114 A

427-365

R.M. SIDLEY, INC.

174-314

15 A

400-714
5.25 A

501-277
Sidco
501-537

205-574
11 A

A	B	C	D
E	F	G	H
I	J	K	L
M	N	O	P

THOMPSON TWP.

SULLIVAN ROAD

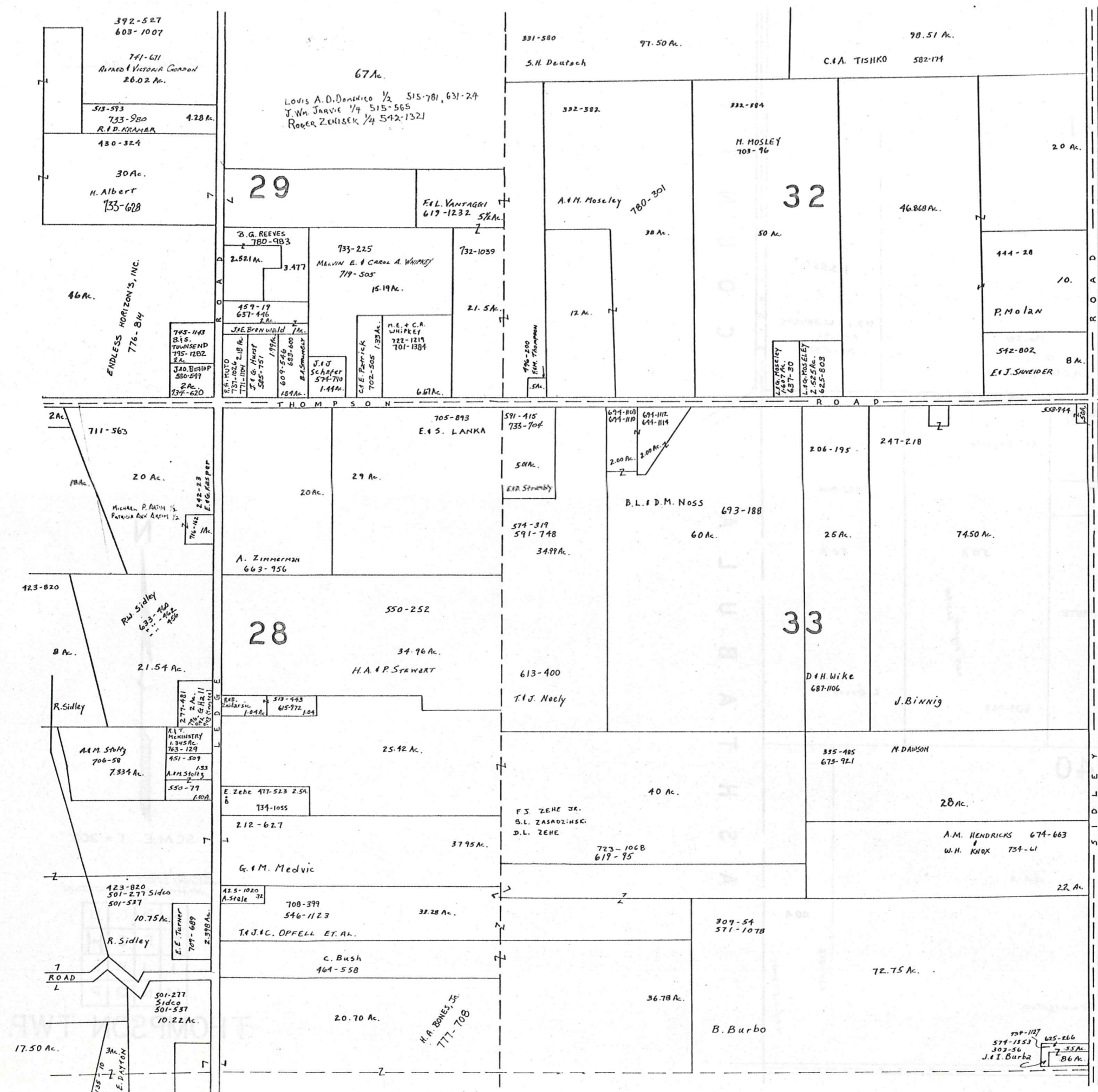
501-277 Sidco
501-537

133-15

17.50 A

R. SIDLEY

3A



392-527
603-1007
741-611
Alfred & Victoria Gordon
26.02 Ac.
513-593
733-980
R.D. KRAMER
4.28 Ac.
430-324
30 Ac.
H. Albert
733-628

67 Ac.
Louis A. D. Donatello 1/2 515-781, 631-24
J. Wm. Jarvie 1/4 515-565
Roger Zehisek 1/4 542-1321
29
E.L. VANTAGGI
617-1232 5 1/2 Ac.
B. G. REEVES
780-983
2.821 Ac.
3.477
733-225
Melvin E. & Carol A. Whippley
719-505
15.19 Ac.
732-1039
2.15 Ac.
459-19
637-446
2 Ac.
JAE Brenwald 7 Ac.
745-143
Bis.
TOWNSEND
745-1282
2 Ac.
JAO. BISHOP
580-247
2 Ac.
734-620
745-1024
2.18 Ac.
771-1094
J.F. & H. HUNT
585-751
1.99 Ac.
609-546
682-400
B. S. Samsky
1.84 Ac.
J.J. Schaffer
574-710
1.44 Ac.
M.E. & C.A. WHIPKEY
722-1214
701-1384
6.67 Ac.
C.F. Patrick
702-505
1.35 Ac.

831-580
S.H. Deutsch
97.50 Ac.
332-582
A.H. Mosley
780-301
38 Ac.
332-184
M. MOSLEY
703-96
50 Ac.
46.868 Ac.
32
444-28
10.
P. Molan
542-802
8 Ac.
E.J. Schneider

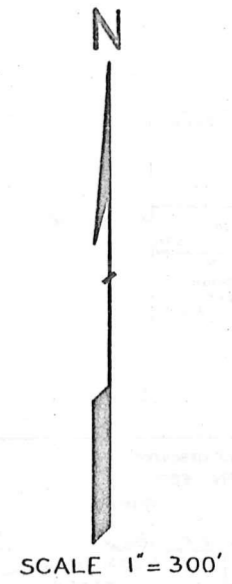
98.51 Ac.
C.A. TISHIKO
582-174
20 Ac.
74.50 Ac.
33
206-195
25 Ac.
74.50 Ac.
247-218
D.H. Wike
687-1106
J. Binnig
335-485
673-921
M. Dawson
28 Ac.
A.M. Hendricks 674-663
W.H. Knox 734-41
22 Ac.

2 Ac.
711-563
18 Ac.
20 Ac.
Michael P. Austin 1/2
Patricia Ann Austin 1/2
242-23
E.G. Asper
716-412
123-820
8 Ac.
21.54 Ac.
R. Sidley
706-58
7.334 Ac.
A.M. Stahly
706-58
7.334 Ac.
A.M. Stahly
451-509
1.33
A.M. Stahly
580-77
1.00 Ac.
123-820
501-277 Side
501-537
10.75 Ac.
R. Sidley
501-277
Side
501-537
10.22 Ac.
17.50 Ac.
3 Ac.
E. DAYTON

705-893
E.S. LANKA
29 Ac.
20 Ac.
A. Zimmerman
663-956
550-252
34.96 Ac.
H.A. & P. Stewart
28
574-443
615-772
1.04 Ac.
25.42 Ac.
E. Zehe 477-523 2.54
134-1055
212-627
37.95 Ac.
G.M. Medic
42.5-1020
A. Stale 72
708-399
546-1123
37.28 Ac.
T.J. & C. Opfell Et. Al.
C. Bush
164-558
20.70 Ac.
H.A. BONES, JR.
777-708

591-415
733-704
5.84 Ac.
E.R. Strambly
574-319
591-748
34.99 Ac.
613-400
T.J. Neely
40 Ac.
F.S. Zehe Jr.
B.L. ZASADZINSKI
D.L. ZEHE
723-1068
619-95
36.78 Ac.
B. Burbo

694-1103
694-1110
2.00 Ac.
694-1112
694-1114
2.00 Ac.
B.L. & D.M. Noss
693-188
60 Ac.
206-195
25 Ac.
74.50 Ac.
D.H. Wike
687-1106
J. Binnig
335-485
673-921
M. Dawson
28 Ac.
A.M. Hendricks 674-663
W.H. Knox 734-41
22 Ac.
72.75 Ac.
734-1127
574-1553
302-56
J.I. Burbo
625-266
7-55 Ac.
7-86 Ac.



A	B	C	D
E	F	G	H
I	J	K	L
M	N	O	P

THOMPSON TWP.
JANUARY 1, 1987
RELATIVE REPRESENTATION

Match Line

Match Line

R.I.J. HARTUNG
4 A
778-268
755-207 2.00 Ac.
T 15
BOTEBAUGH
755-207 3.0 Ac.

R.I.J. MESCHTER
796-587
10.00 Ac.

R.I.J. RESERVOIR
586-920
B.W. FISHER
REMARKS
2043 A
R.I.J. CONTOUR
R.I.J. CONTOUR
5533 AC.
J. Winchell 1/2

41

163.55 Ac.

796-591
80 Ac.
P.M.J.D. CORP.

D.J. & R.W. KANGAS
552-97
748-1251

R O A D
S H O R T
C O U N T Y

THOMPSON ROAD

695-469
289-378
W.A. LITTLE
LITTLE

205-92
282-253
WYNE A LITTLE & CONNIE J LITTLE
19.765 Ac. 759-221

R & R Beyerle

TIM SCHAEFFER
60-811

685-397
M.C. + T. Schaeffer
5.5 Ac.

492-909

50 A

50 A

G.H. PORTER
3.44 Ac.
793-917

69.5 Ac.
685-191
D., R., A., + V. DELPRETE

P.M. HIGERT 445-951

L. Davis

505-969

292-570

40

647-1121
R.E. SKINNER 4 A.

341-478

15 A

L. C. ALDRIDGE 14

124 A

492-642

5A

3A

J. Ornstein & F. S. Leighton

20 A

424-912

H.S. & A.J. Kuyper

A S H T A B U L A



SCALE 1" = 300'

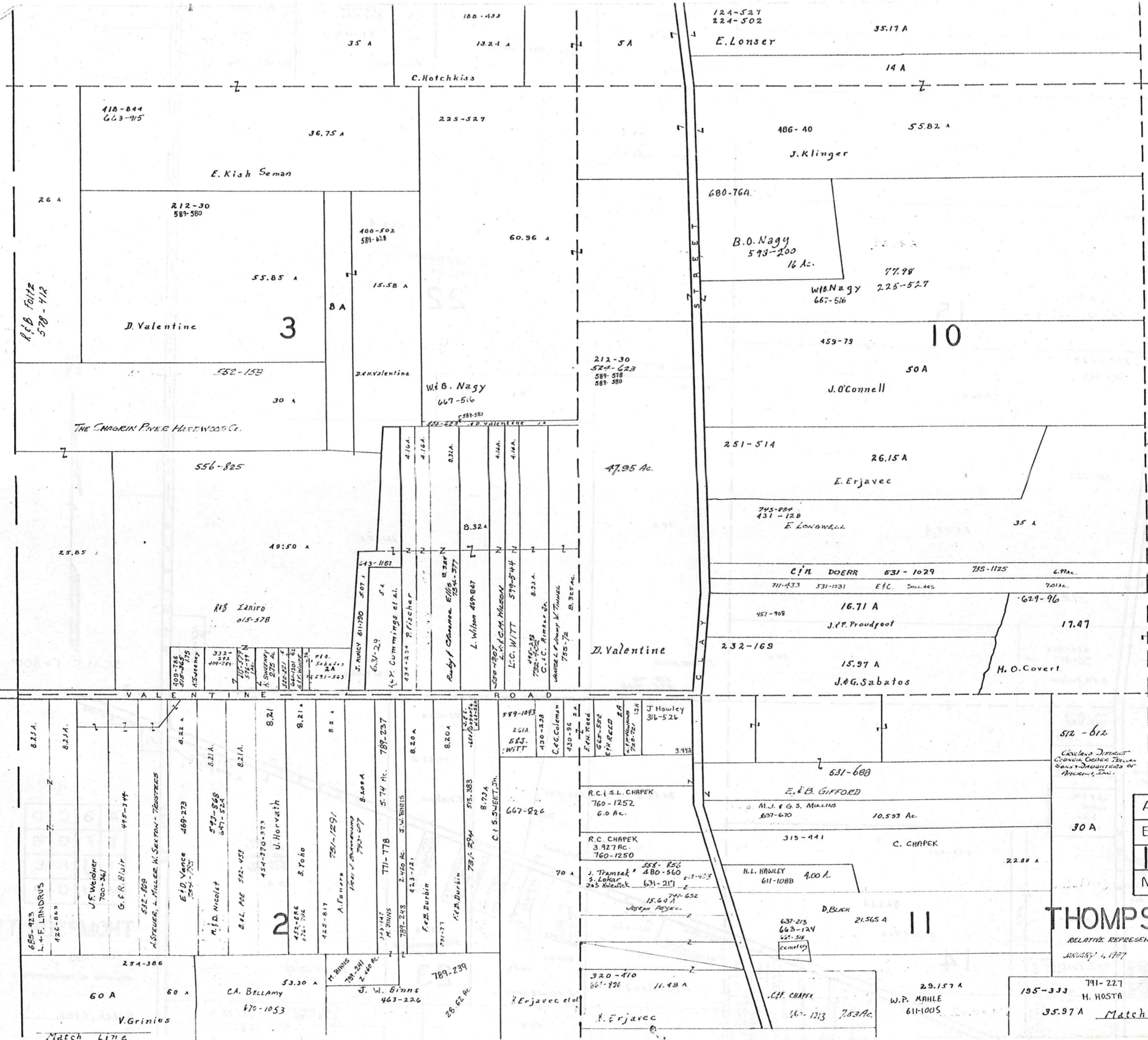
JANUARY 1, 1987
RELATIVE REPRESENTATION

A	B	C	D
E	F	G	H
I	J	K	L
M	N	O	P

THOMPSON TWP.

COUNTY

LAKE

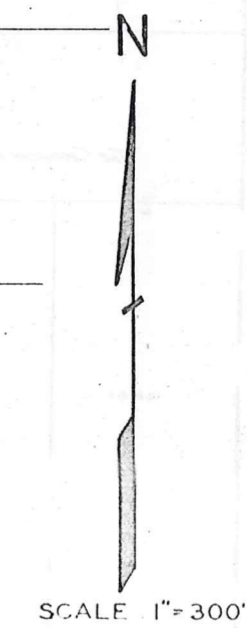
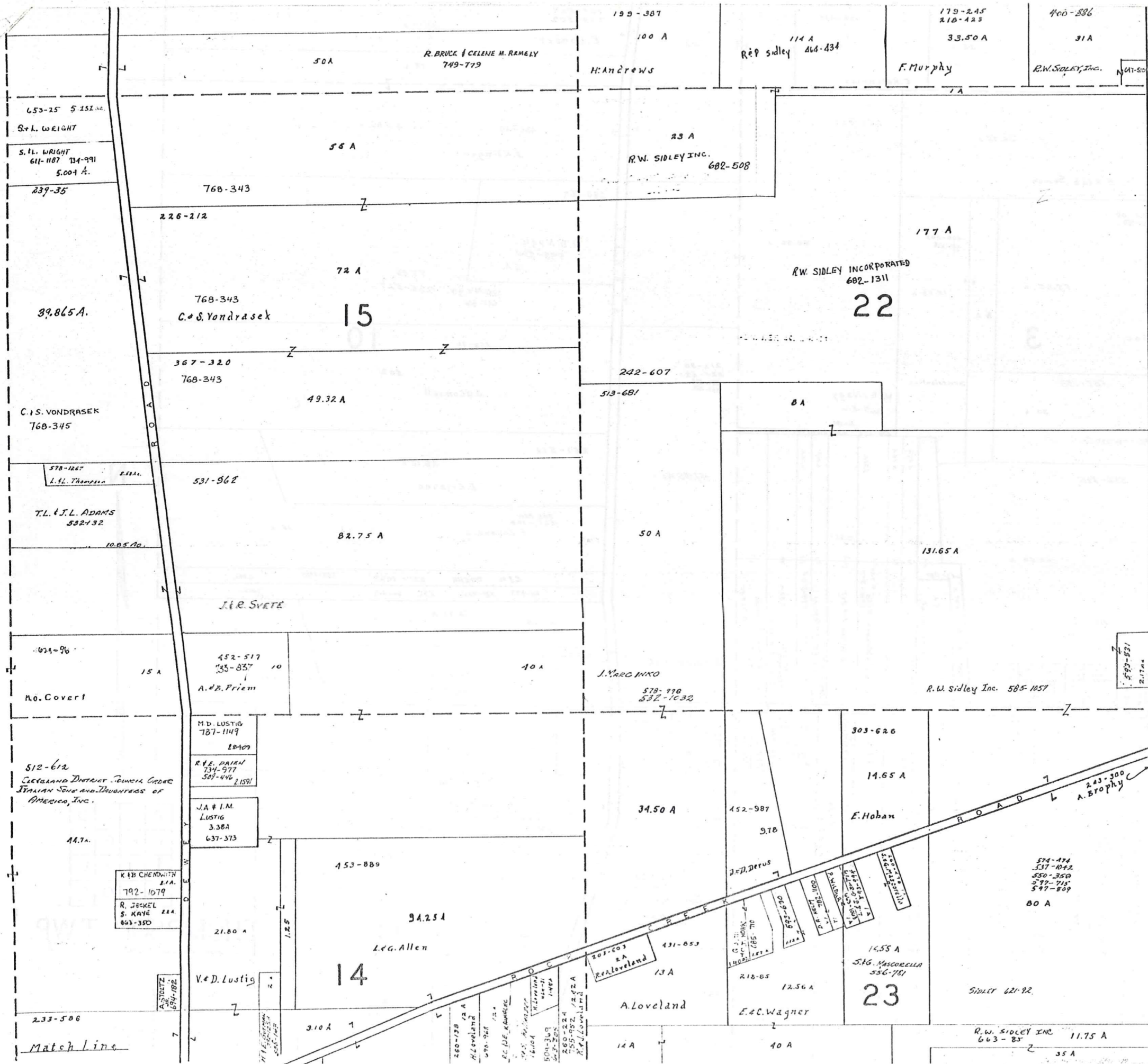


SCALE 1" = 300'

A	B	C	D
E	F	G	H
I	J	K	L
M	N	O	P

THOMPSON TWP.

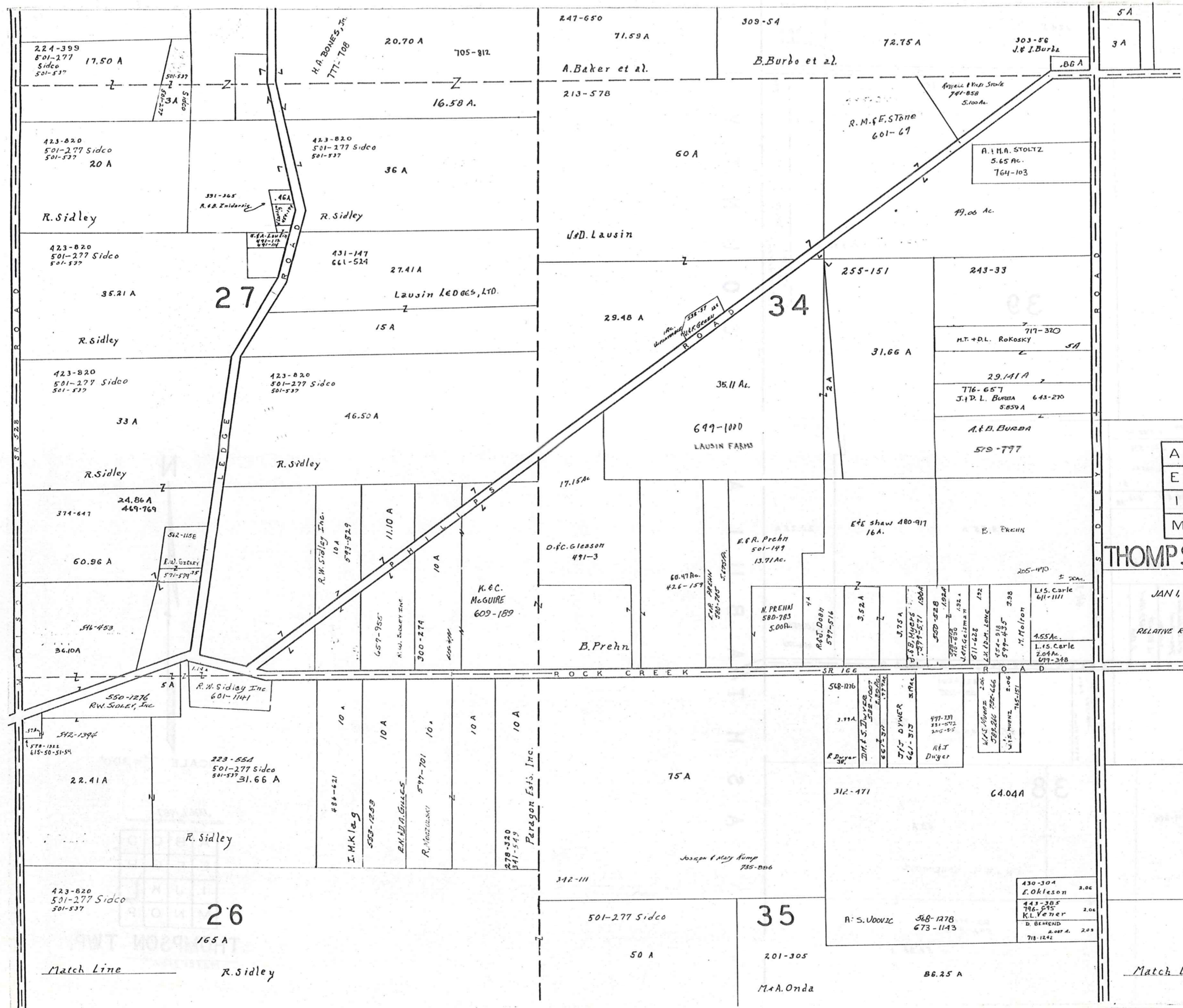
RELATIVE REPRESENTATION
JANUARY 1, 1927



A	B	C	D
E	F	G	H
I	J	K	L
M	N	O	P

THOMPSON TWP
 JAN. 1, 1987
 RELATIVE REPRESENTATION

Match Line



SCALE 1"=300'

A	B	C	D
E	F	G	H
I	J	K	L
M	N	O	P

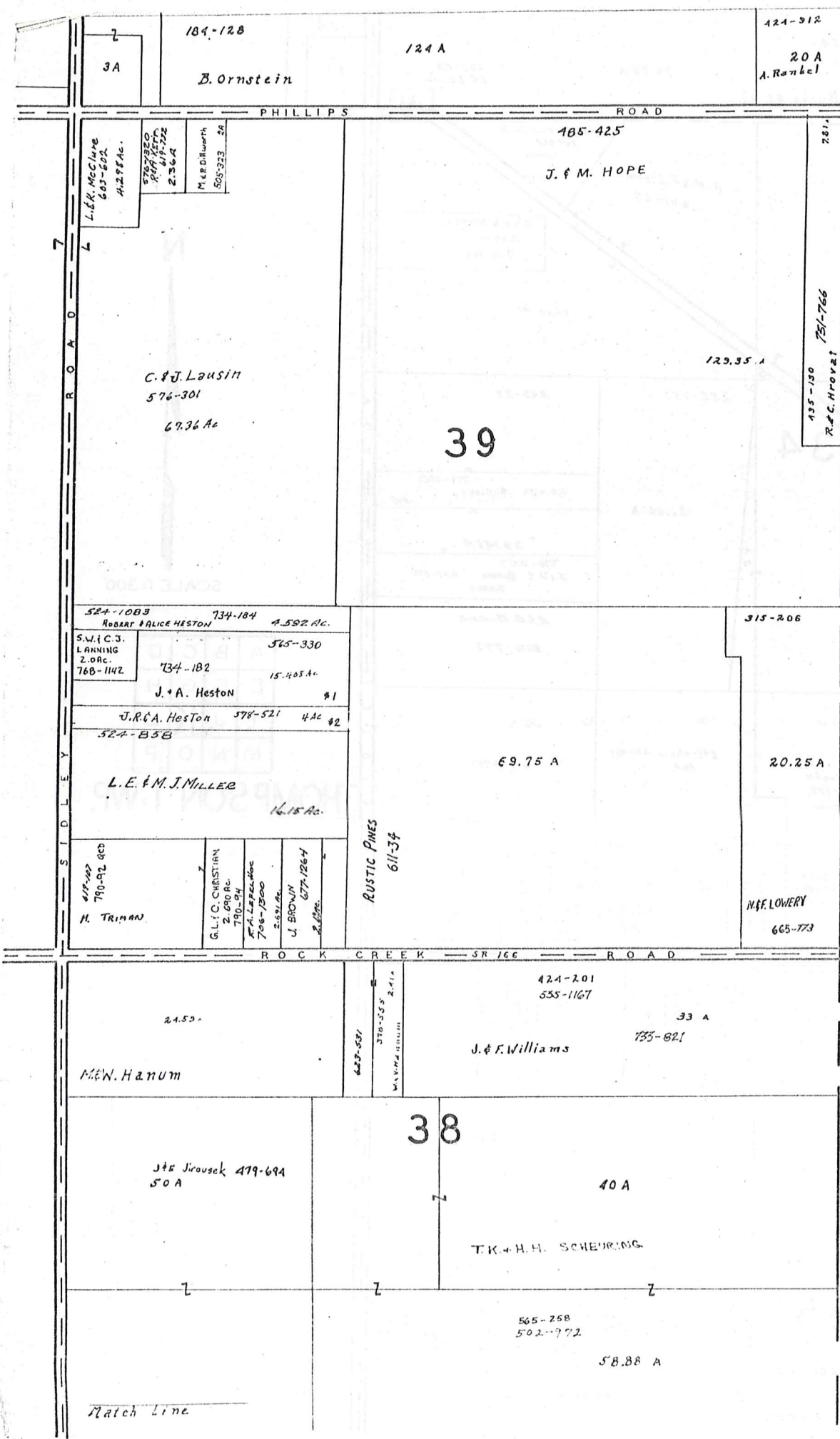
THOMPSON TWP.

JAN 1, 1907

RELATIVE REPRESENTATION

Match Line R. Sidley

Match Line



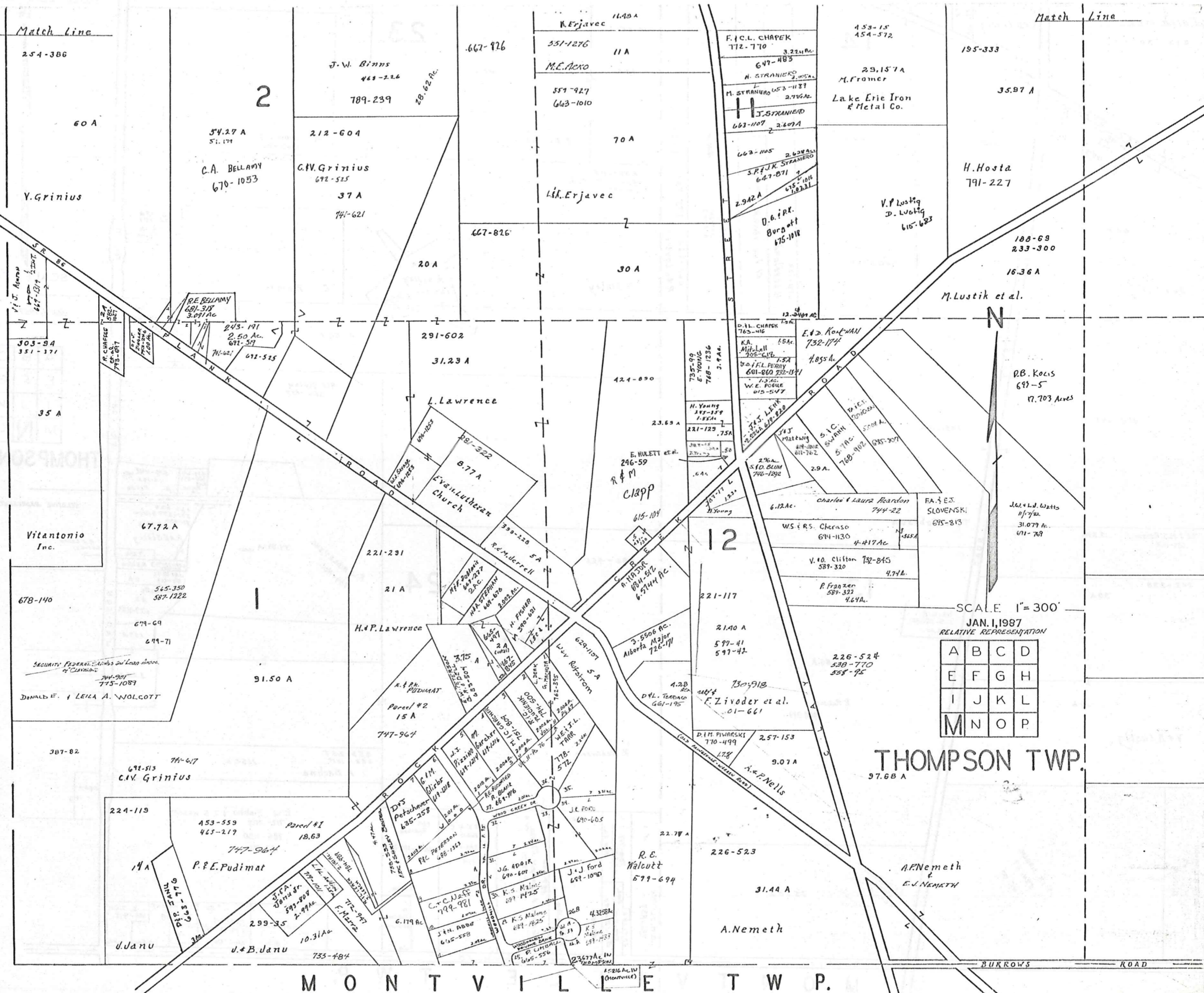
SCALE 1" = 300'

JAN. 1, 1987
RELATIVE REPRESENTATION

A	B	C	D
E	F	G	H
I	J	K	L
M	N	O	P

THOMPSON TWP.
Match Line

L A K E C O U N T Y



SCALE 1" = 300'

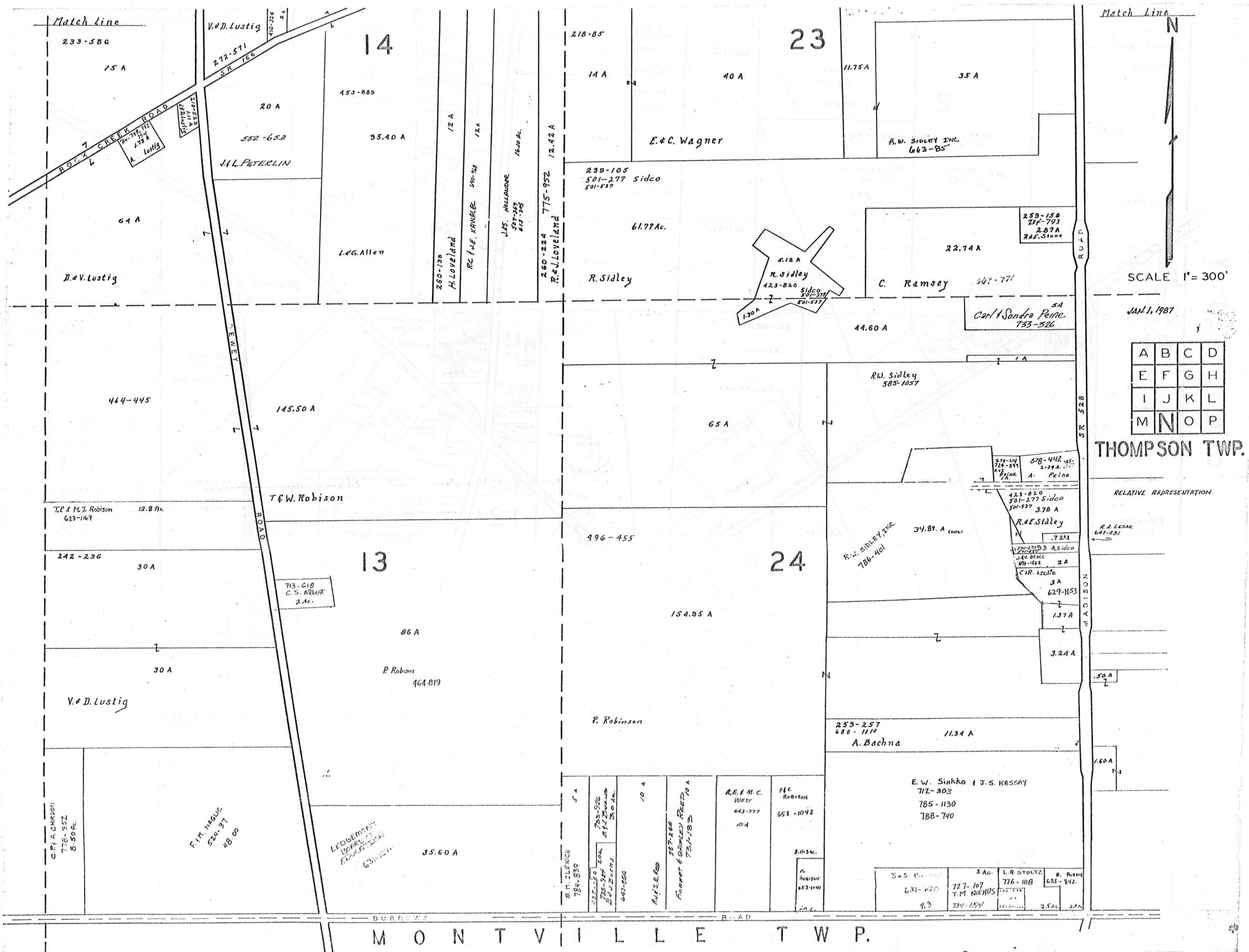
JAN. 1, 1987

RELATIVE REPRESENTATION

A	B	C	D
E	F	G	H
I	J	K	L
M	N	O	P

THOMPSON TWP.
97.68 A

M O N T V I L L E T W P.

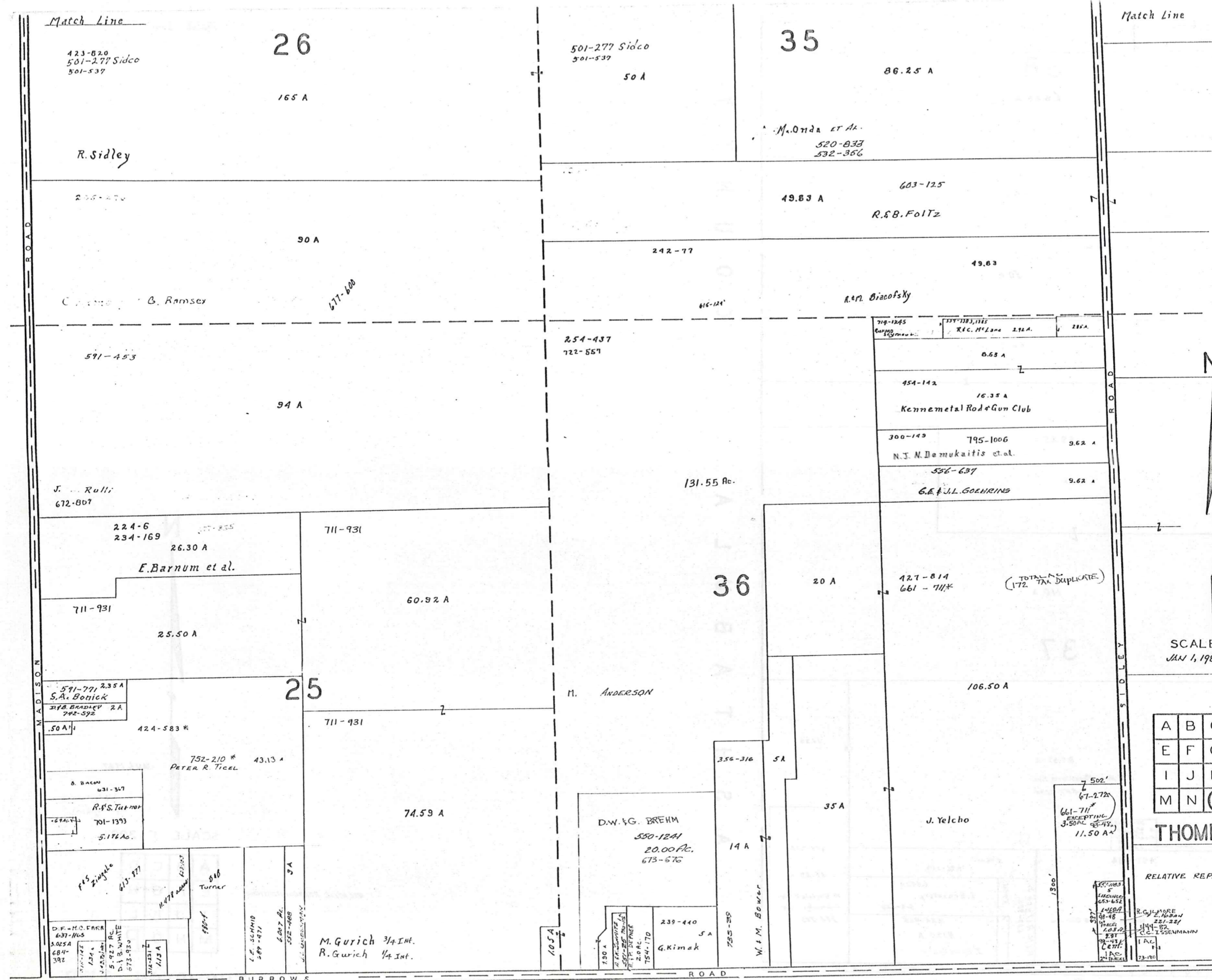


A	B	C	D
E	F	G	H
I	J	K	L
M	N	O	P

THOMPSON TWP.

RELATIVE REPRESENTATION

MONTVILLE TWP.



Match Line

Match Line

26

35

38

423-820
501-277 Sidco
501-537

501-277 Sidco
501-537

M. Onda et al.
520-833
532-366

R. Sidley

205-470

603-125
49.83 A
R.S.B. Foltz

G. Ramsey

577-600

254-437
722-557

R.M. Biacofsky

591-453

94 A

131.55 Ac.

718-1245
R.C. McLane 1.72 A
285 A
0.68 A
454-142
16.35 A
Kennemetal Rod & Gun Club
300-149
795-1006
N.J. N. Demukaitis et al. 9.62 A
536-637
G.E. & J.L. GOENRING 9.62 A

J. Roll
672-807

224-6
234-169
26.30 A

E. Barnum et al.

711-931

60.92 A

36

20 A

127-814
661-711* (TOTAL 172 TAN DUPLICATE)

711-931

25.50 A

106.50 A

591-771 2.35 A
S.A. Bonick
278 BRADLEY 2 A
742-392

25

M. ANDERSON

424-583 *

752-210 *
PETER R. TICEL 43.13 A

711-931

74.59 A

356-316 5 A

35 A

J. Yelcho

8. BACON
631-347

R.S. Turner
701-1393

5.176 Ac.

F.S. Zingale
613-977

816
Turner

510-1

3 A

D.W. & G. BREHM
550-1241
20.00 Ac.
673-676

14 A

W. M. Bower

239-440
5 A
G. Kimak

502'
67-272
661-711
EXCEPTING
J. S. O'NEILL
11.50 A

D.F. H.C. FAHR
637-865
5.025 A
684-
392

5.927 Ac.
D.J. B. WHITE
573-920

512-231
1/12 A

L.E. SCHMID
589-471

607 Ac.
592-468

M. Gurich 3/4 Int.
R. Gurich 1/4 Int.

1380'
502'
67-272
661-711
EXCEPTING
J. S. O'NEILL
11.50 A

A	B	C	D
E	F	G	H
I	J	K	L
M	N	O	P

THOMPSON TWP.

RELATIVE REPRESENTATION

R.G. MOORE
281-221
J.H. RO
C.C. LISSENMANN
1 Ac.
73-180

SCALE 1" = 300'
JAN 1, 1987

M O N T V I L L E T O W N S H I P

Match Line

Match Line

459-355

38

68.88 A

J. Stocker

7

603-125

50 A

R. & B. FOLTZ

50 A

J. Stocker

25 A

69.25 A

257-418

5.75 A

E. Stocker

110 A

J. Stocker

37

87.37 A

U.S. Auto Receivers, Inc.

587-1330

14.35 A

551-1103
S 65-15
E 75-18
E 22-12
2227.6

491-654

H.A.A. HOUSER 36.88 Ac.

5.96 Ac.

496-153

6.942 A

J. Brazofsky

512-628

425-955

9.125 A

J. Brazofsky

492-272

15.59 A

M. Smialak Sr

H. Smialak Sr

744-715

A S H T A B U L L A C O U N T Y



JAN. 1987

SCALE 1" = 300'

RELATIVE REPRESENTATION

A	B	C	D
E	F	G	H
I	J	K	L
M	N	O	P

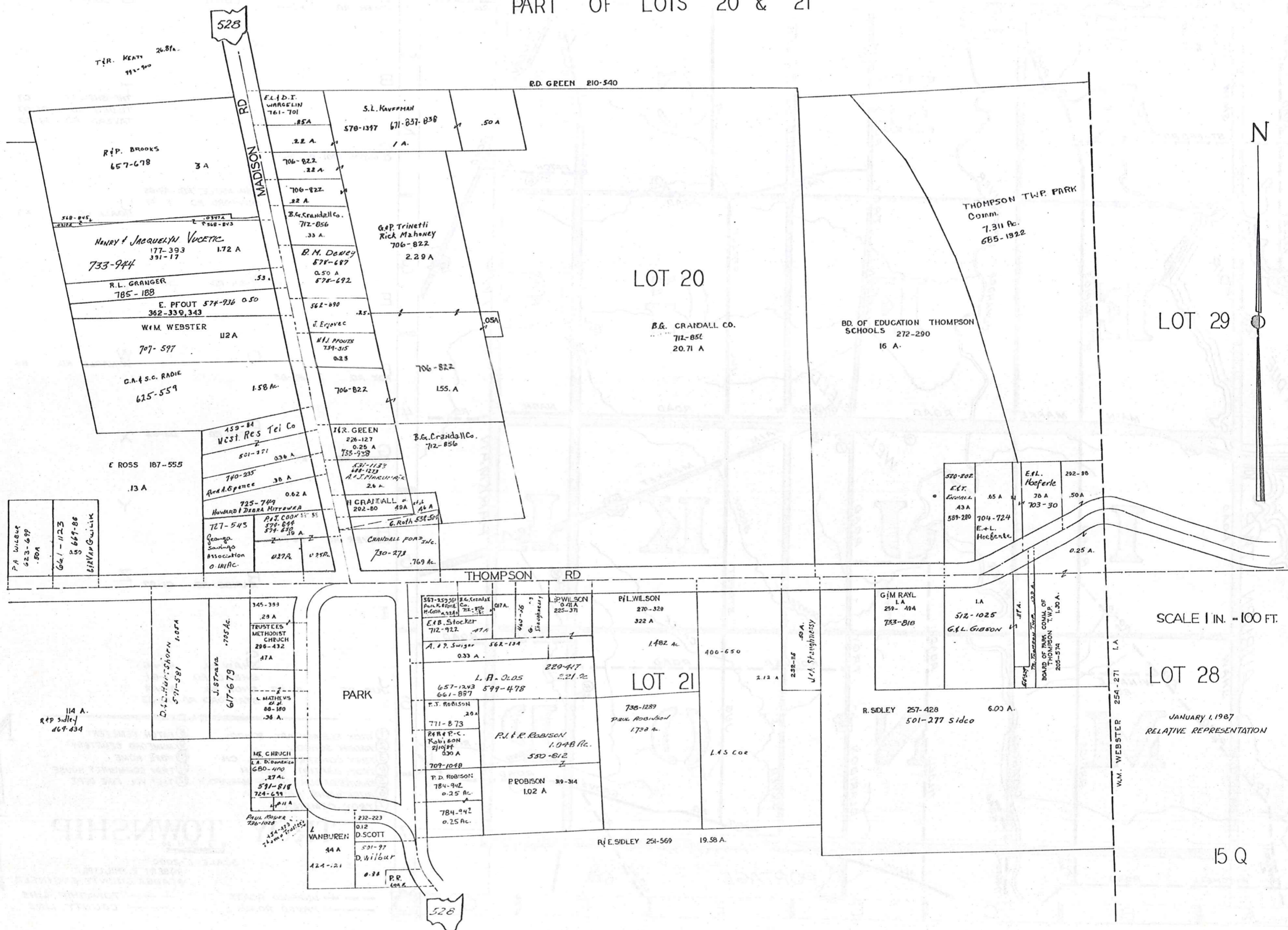
THOMPSON TWP.

MONTVILLE

TWP.

THOMPSON TP

PART OF LOTS 20 & 21



Explanation and Use Sheet for Geauga County, Ohio

SAMPLE (PARTIAL) COUNTY INDEX MAP



- Township Boundary
- Township Name
- Village Boundary
- Village Name
- Tract Lot Number
- Street Name
- Acreage
- Deed Book & Page
- Owners Name
- Denotes Continous Ownership

SAMPLE (PARTIAL) MAP PAGE



- Map Page Number
- Village Name
- Village Boundary
- Township Name

SAMPLE (PARTIAL) MUNICIPALITY INDEX MAP



- Street Name
- Village Name
- Township Name

USE OF THE MAP VOLUME

1. LOCATE THE GENERAL AREA OF INTEREST ON THE COUNTY INDEX MAP, ATLAS PAGE 'B', AND NOTE THE MUNICIPALITY NAME (TOWNSHIP OR VILLAGE).
2. REFER TO THE TABLE OF CONTENTS, ATLAS PAGE 'C', AND NOTE THE BEGINNING ATLAS PAGE NUMBER FOR THE MUNICIPALITY OF INTEREST.
3. TURN TO THE PAGE INDICATED. ON THIS PAGE WILL APPEAR AN INDEX MAP FOR THAT MUNICIPALITY.
4. LOCATE THE GENERAL AREA OF INTEREST AND NOTE THE MAP PAGE NUMBER. THIS MAY BE EITHER A LETTER OR A NUMBER.
5. MAP PAGES ARE IN ALPHABETICAL (OR NUMERICAL) SEQUENCE FOLLOWING THE MUNICIPALITY INDEX MAP. FOLLOW SEQUENCE TO THE MAP PAGE INDICATED.
6. LOCATE SPECIFIC PARCEL OF INTEREST AND NOTE THE DESIRED INFORMATION.

NOTE: ON SOME MAPS YOU MAY BE REFERRED TO A DETAIL SHEET SHOWING AN ENLARGEMENT OF THE AREA. THESE MAPS ARE FOUND AT THE END OF THE REGULAR MAP PAGES IN EACH MUNICIPALITY IN EITHER ALPHABETICAL OR NUMERICAL SEQUENCE.

NOTE: CHARDON VILLAGE HAS TITLE SHEETS. TO LOCATE OWNERS NAME, NOTE THE PARCEL NUMBER, REFER TO THE TITLE PAGE FOLLOWING THE MAP OF INTEREST, FOLLOW NUMERICAL SEQUENCE TO THE PARCEL NUMBER OF INTEREST AND NOTE THE DESIRED INFORMATION. IN ALL OTHER MUNICIPALITIES THE OWNERS NAME APPEARS ON THE MAP PAGE.

This book is the property of REAL ESTATE DATA, INC. and is distributed by REDI under a leasing arrangement requiring return to REDI upon termination of the lease. REDI reserves the right to reclaim this book if found in the possession of any firm or person where possession was obtained through any unauthorized source.